



Microsoft Dynamics™ GP  
**Multilingual Checks**

**Copyright**

Copyright © 2007 Microsoft Corporation. All rights reserved.

Complying with all applicable copyright laws is the responsibility of the user. Without limiting the rights under copyright, no part of this document may be reproduced, stored in or introduced into a retrieval system, or transmitted in any form or by any means (electronic, mechanical, photocopying, recording, or otherwise), or for any purpose, without the express written permission of Microsoft Corporation. Notwithstanding the foregoing, the licensee of the software with which this document was provided may make a reasonable number of copies of this document solely for internal use.

**Trademarks**

Microsoft and Microsoft Dynamics are either registered trademarks or trademarks of Microsoft Corporation or its affiliates in the United States and/or other countries. FairCom and c-tree Plus are trademarks of FairCom Corporation and are registered in the United States and other countries.

The names of actual companies and products mentioned herein may be trademarks or registered marks - in the United States and/or other countries - of their respective owners.

Unless otherwise noted, the example companies, organizations, products, domain names, e-mail addresses, logos, people, places, and events depicted herein are fictitious. No association with any real company, organization, product, domain name, e-mail address, logo, person, place, or event is intended or should be inferred.

**Intellectual property**

Microsoft may have patents, patent applications, trademarks, copyrights, or other intellectual property rights covering subject matter in this document. Except as expressly provided in any written license agreement from Microsoft, the furnishing of this document does not give you any license to these patents, trademarks, copyrights, or other intellectual property.

**Warranty disclaimer**

Microsoft Corporation disclaims any warranty regarding the sample code contained in this documentation, including the warranties of merchantability and fitness for a particular purpose.

**Limitation of liability**

The content of this document is furnished for informational use only, is subject to change without notice, and should not be construed as a commitment by Microsoft Corporation. Microsoft Corporation assumes no responsibility or liability for any errors or inaccuracies that may appear in this manual. Neither Microsoft Corporation nor anyone else who has been involved in the creation, production or delivery of this documentation shall be liable for any indirect, incidental, special, exemplary or consequential damages, including but not limited to any loss of anticipated profit or benefits, resulting from the use of this documentation or sample code.

**License agreement**

Use of this product is covered by a license agreement provided with the software product. If you have any questions, please call the Microsoft Dynamics GP Customer Assistance Department at 800-456-0025 (in the U.S. or Canada) or +1-701-281-6500.

**Publication date**

March 2007

# Contents

<b>Introduction</b> .....	<b>1</b>
What's in this manual.....	1
Symbols and conventions .....	2
Resources available from the Help menu.....	2
Send us your documentation comments .....	4
<b>Chapter 1: Setup and Cards</b> .....	<b>5</b>
Enabling Multilingual Checks .....	5
Enabling the Arabic language.....	6
Setting up currency terminology .....	7
Setting up the default checkbook language.....	9
Setting up the default vendor address language .....	10
<b>Chapter 2: Transactions</b> .....	<b>11</b>
Modifying the language for a payables check batch .....	11
Modifying the language for a single payables check .....	12
Modifying the language to print a miscellaneous check .....	14
Voiding and reprinting printed checks.....	15
<b>Glossary</b> .....	<b>17</b>
<b>Index</b> .....	<b>19</b>



# Introduction

Multilingual Checks is a tool you can use to print the check amount in words, in languages other than the system language. For example, a company in France may want to print the check amount in words in Portuguese on the checks for its vendors in Portugal. You can use Multilingual Checks to set up the currency terminology for a currency ID, assign a default language for a checkbook, and select and print checks in different languages. The different languages available are Arabic, English, French, Portuguese and Spanish. You can also use Multilingual Checks to print checks in the Canadian check layout specified by the Canadian authorities.

## Check for current instructions

This information was current as of February 2007. The documentation may be updated as new information becomes available. Check the Microsoft Dynamics GP online Web site (<http://go.microsoft.com/fwlink/?LinkID=79222>) for the most current documentation.

This introduction is divided into the following sections:

- [What's in this manual](#)
- [Symbols and conventions](#)
- [Resources available from the Help menu](#)
- [Send us your documentation comments](#)

## What's in this manual

This manual is designed to give you an understanding of how to use the features of Multilingual Checks, and how it integrates with the Microsoft Dynamics™ GP system.

To make best use of Multilingual Checks, you should be familiar with systemwide features described in the System User's Guide, the System Setup Guide, and the System Administrator's Guide.

Some features described in the documentation are optional and can be purchased through your Microsoft Dynamics GP partner.




To view information about the release of Microsoft Dynamics GP that you're using and which modules or features you are registered to use, choose Help >> About Microsoft Dynamics GP.

The manual is divided into the following chapters:

- [Chapter 1, "Setup and Cards"](#) provides information on how to enable multilingual checks, set up currency terminologies, set up a default vendor address language and set up a default language for a checkbook. You can also select a format for the check layout, whether Default or Canadian, to print checks.
- [Chapter 2, "Transactions"](#) provides information on how to select and print the payables checks batch, payables transactions and miscellaneous checks in different languages.

## Symbols and conventions

For definitions of unfamiliar terms, see the glossary in the manual or refer to the glossary in Help.

Symbol	Description
	The light bulb symbol indicates helpful tips, shortcuts and suggestions.
	The warning symbol indicates situations you should be especially aware of when completing tasks.
	The multicurrency symbol points out features or procedures that apply if you're using Multicurrency Management.

This manual uses the following conventions to refer to sections, navigation and other information.

Convention	Description
<i>Creating a batch</i>	Italicized type indicates the name of a section or procedure.
File >> Print or <b>File &gt; Print</b>	The (>>) or (>) symbol indicates a sequence of actions, such as selecting items from a menu or toolbar, or pressing buttons in a window. This example directs you to go to the File menu and choose Print.
TAB or ENTER	All capital letters indicate a key or a key sequence.

## Resources available from the Help menu

The Microsoft Dynamics GP Help menu gives you access to user assistance resources on your computer, as well as on the Web.

### Contents

Opens the Help file for the active Microsoft Dynamics GP component, and displays the main “contents” topic. To browse a more detailed table of contents, click the Contents tab above the Help navigation pane. Items in the contents topic and tab are arranged by module. If the contents for the active component includes an “Additional Help files” topic, click the links to view separate Help files that describe additional components.

To find information in Help by using the index or full-text search, click the appropriate tab above the navigation pane, and type the keyword to find.

To save the link to a topic in the Help, select a topic and then select the Favorites tab. Click Add.

### Index

Opens the Help file for the active Microsoft Dynamics GP component, with the Index tab active. To find information about a window that's not currently displayed, type the name of the window, and click Display.

### About this window

Displays overview information about the current window. To view related topics and descriptions of the fields, buttons, and menus for the window, choose the

appropriate link in the topic. You also can press F1 to display Help about the current window.

## Lookup

Opens a lookup window, if a window that you are viewing has a lookup window. For example, if the Checkbook Maintenance window is open, you can choose this item to open the Checkbooks lookup window.

## Show Required Fields

Highlights fields that are required to have entries. Required fields must contain information before you can save the record and close the window. You can change the font color and style used to highlight required fields. On the Microsoft Dynamics GP menu, choose User Preferences, and then choose Display.

## Printable Manuals

Displays a list of manuals in Adobe Acrobat .pdf format, which you can print or view.

## Orientation Training

Accesses online tutorials that show you how to complete basic procedures within Microsoft Dynamics GP. Additional tutorials are available through the CustomerSource Web site.

## What's New

Provides information about enhancements that were added to Microsoft Dynamics GP since the last major release.

## Microsoft Dynamics GP Online

Opens a Web page that provides links to a variety of Web-based user assistance resources. Access to some items requires registration for a paid support plan.

**Current implementation and upgrade information** The most recent revisions of upgrade and implementation documentation, plus documentation for service packs and payroll tax updates.

**User documentation and resources** The most recent user guides, how-to articles, and white papers for users.

**Developer documentation and resources** The most recent documentation and updated information for developers.

**Product support information** Information about the Microsoft Dynamics GP product support plans and options that are available, along with information about peer support and self-support resources.

**Services information** Information about Microsoft Dynamics GP support, training, and consulting services.

**Microsoft Dynamics GP Community** Access to newsgroups, where you can ask questions or share your expertise with other Microsoft Dynamics GP users.

**CustomerSource home page** A wide range of resources available to customers who are registered for a paid support plan. Includes access to Knowledge Base articles, software downloads, self-support, and much more.

### **U.S. Payroll Updates**

Provides access to tax updates for state and federal tax withholding. When you select an option, the process to install the updates will begin immediately.



*Check with your system administrator before installing tax updates. To be sure that tax updates are installed correctly, refer to documentation for specific tax updates on the CustomerSource Web site.*

### **Customer Feedback Options**

Provides information about how you can join the Customer Experience Improvement Program to improve the quality, reliability, and performance of Microsoft® software and services.

## **Send us your documentation comments**

We welcome comments regarding the usefulness of the Microsoft Dynamics GP documentation. If you have specific suggestions or find any errors in this manual, send your comments by e-mail to the following address: [bizdoc@microsoft.com](mailto:bizdoc@microsoft.com).

To send comments about specific topics from within Help, click the Documentation Feedback link, which is located at the bottom of each Help topic.

*Note: By offering any suggestions to Microsoft, you give Microsoft full permission to use them freely.*

# Chapter 1: Setup and Cards

Use the following information to enable multilingual checks, select the check, set up the currency terminologies and select the default language for the checkbook and vendor address.



*You can now use Multilingual Checks to print checks in the new Canadian check layout specified by the Canadian authorities.*

When you set up Multilingual Checks, you can open each setup window and enter information, or you can use the Setup Checklist window (Microsoft Dynamics GP menu >> Tools >> Setup >> Setup Checklist) to guide you through the setup process. Refer to your System Setup Guide (Help >> Contents >> select Setting up the System) for more information about the Setup Checklist window.

This information is divided into the following sections:

- [Enabling Multilingual Checks](#)
- [Enabling the Arabic language](#)
- [Setting up currency terminology](#)
- [Setting up the default checkbook language](#)
- [Setting up the default vendor address language](#)

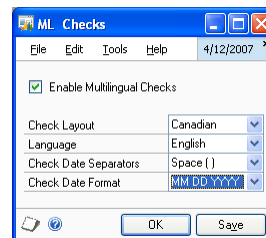
## Enabling Multilingual Checks

Use the ML Checks window to enable multilingual checks. Enabling multilingual checks will allow you to print checks in multiple languages. You can also select a format for the check layout.

You can start using multilingual checks only after enabling it in this window.

### To enable Multilingual Checks:

1. Open the ML Checks window.  
(Microsoft Dynamics GP menu >> Tools >> Setup >> Company >> Company >> Options >> Additional >> ML Checks)



2. Mark the Enable Multilingual Checks option to enable the multilingual checks feature. You must mark this option for each company for which you want to print the checks in multiple languages.

If you unmark the Enable Multilingual Checks option, the multilingual checks feature will not be available for the company the user has logged into. All the multilingual checks setup information will be deleted.

3. Select a check layout to print the check. This field is available only if you have marked the Enable Multilingual Checks option.

**Default** Select this option to print checks in the default format defined in the Microsoft Dynamics GP. Refer to the Microsoft Dynamics GP documentation for more information on check formats.

**Canadian** Select this option to print checks in the format specified by the Canadian legal authorities. The Language, Check Date Separators, and Check Date Format fields become available.

4. Select a language, whether English or French, to print the check. English and French are the languages currently supported by the Canadian authorities for Canadian layout checks.
5. Select the character that will separate the day, month, and year in the Check Date Separators field.
6. Select the date format to be used for the check in the Check Date Format field.
7. Choose Save to save the information you have set up.
8. Choose OK to close the window.

## Enabling the Arabic language

You must enable the Arabic language option for your system before you can print checks in Arabic. Use the following information to enable the Arabic option for different operating systems.

### To enable the Arabic language for Microsoft Windows XP and Windows 2003:

1. Open the Regional and Language options window.  
(Start >> Control Panel >> Regional and Language options)
2. Choose the Languages tab.
3. Mark the Install files for complex scripts and right-to-left languages (including Thai) option in the Supplemental language support group. Click OK on the message that appears and click the Apply button.
4. Choose the Advanced tab and select the Arabic (U.A.E) option in the Language for non-Unicode programs group.
5. Choose Apply to apply the selection you have made.
6. Choose OK to save the selection and close the window. A language bar appears on your system taskbar, with the Arabic (U.A.E) option included.
7. Mark the Arabic (U.A.E) option in the language bar to print checks in Arabic.

## To enable the Arabic language for Microsoft Windows 2000:

1. Open the Regional options window.  
(Start >> Settings >> Control Panel >> Regional options)
2. Mark the Arabic option in the Language settings for the system scrolling window.
3. Choose Arabic (U.A.E) as the local language in the local (Location) list box.
4. Choose the Advanced tab.
5. Mark all the conversion tables for Arabic language in the Code Page conversion Tables group.
6. Choose OK and then choose Apply to apply the selection you've made.
7. Restart your computer. A language bar appears on your system taskbar, with the Arabic (U.A.E) option included.
8. Mark the Arabic (U.A.E) option in the language bar to print checks in Arabic.

## Setting up currency terminology

Use the information in this section to specify the appropriate currency unit, unit-subunit connector and currency subunit for a language specific to a currency ID.

You can set up the currency terminologies in different languages for each currency ID. If you delete the currency ID, the currency terminologies specific to that currency ID will be deleted.

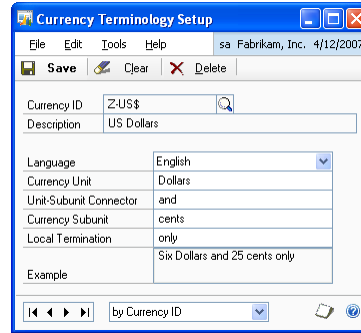
If you are using the Canadian check layout, be sure to set up the currency terminology here as per the legal specifications for the selected language. You must enter the correct ISO Code for the selected currency in the Currency Setup window to be printed on the checks.



*If you haven't set up the currency terminology for a language, or if you have deleted the currency terminology, the Amount in words field displays blank spaces while printing checks.*

**To set up currency terminology:**

1. Open the Currency Terminology Setup window.  
(Microsoft Dynamics GP menu >> Tools >> Setup >> System >> Currency >> Additional >> Currency Language)  
(Microsoft Dynamics GP menu >> Tools >> Setup >> System >> Currency Language)



2. If you have opened this window from the Additional menu, the Currency ID will display default values from the Currency Setup window. Select a different currency ID, if required.

If you have not opened this window using the Additional menu, enter or select a currency ID.

3. The Description field displays the description of the selected currency ID.
4. Select the language for the currency ID, whether Arabic, English, French, Portuguese or Spanish.
5. Enter the currency unit that will appear on the printed checks for the selected language and currency. For example, the currency unit for U.S. dollar when the language selected is English would be "Dollars".
6. Enter the word that will connect the currency unit and currency subunit when you print the checks. For example, the unit subunit connector for U.S. dollar when the language is English would be "And".
7. Enter the currency subunit that will appear on the printed checks. For example, the subunit currency for U.S. dollar when the language selected is English would be "Cents".

If you have selected the same language for the currency ID as the system language, the Currency Unit, Unit-Subunit Connector and Currency Subunit fields will display default values from the Currency Setup window. The currency units for Arabic language will never be displayed as default values.

8. Enter a text in the Local Termination field. This text will appear after the total amount when you print the check.
9. You can view an example of the terminology setup you have specified in the Example field.
10. Choose Save to save the values entered in this window.

- Choose Delete to delete the currency terminologies set up for a language.

## Setting up the default checkbook language

Use the Default Language Setup window to assign a default language to a checkbook. The language selected in this window will be used as the default language to print payables computer checks batches and miscellaneous checks assigned to this checkbook. During transaction entry, you can change this language.

If you delete the checkbook ID set up in the Checkbook Maintenance window, all the multilingual information set up for that checkbook will be deleted.

### To set up the default checkbook language:

- Open the Default Language Setup window.  
(Cards >> Financial >> Checkbook >> Additional >> Checkbook Language Setup)



- The Checkbook ID and Description fields display the values selected in the Checkbook Maintenance window.
- Mark the Multilingual option to assign a default language to the checkbook.  
  
The Language field is available only when you mark this option.
- Select the default language for the checkbook. The options are Arabic, English, French, Portuguese or Spanish. You can also select Vendor to print the check in the default language selected for the vendor to whom you are making a payment. Refer to [Setting up the default vendor address language](#) on page 10 for more information.
- Select a check layout to print the check. This field is available only if the selected language is either English or French.

**Default** Select this option to print checks in the default check format defined in the Microsoft Dynamics GP. Refer to the Microsoft Dynamics GP documentation for more information.

**Canadian** Select this option to print checks in the format specified by the Canadian legal authorities. You can print Canadian checks only in English or French languages.

- Choose OK to assign the selected language to the checkbook and close the window.

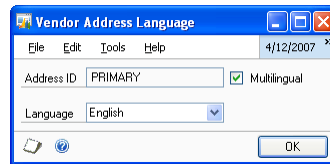
If you close the Checkbook Maintenance window, the Default Language Setup window also closes, without saving the changes.

## Setting up the default vendor address language

Use the Vendor Address Language window to select a default language in which to print checks for a selected vendor. You can set up a different language for each address ID for a vendor.

### To select a default vendor address language:

1. Open the Vendor Address Language window.  
(Cards >> Purchasing >> Vendor >> Address button >> Select an address ID >> Additional >> Vendor Address Language)  
(Cards >> Purchasing >> Addresses >> Select an address ID >> Additional >> Vendor Address Language)



2. The Address ID field displays the selected address ID from the Vendor Address Maintenance window.
3. Mark the Multilingual option to select a language. The Language field is available only when you mark this option.
4. Select a language, whether Arabic, English, French, Spanish or Portuguese, to print the checks.
5. Choose OK to save the changes.

If you close the Address Maintenance window while the Vendor Address Language window is open, the Vendor Address Language window also closes, without saving any changes.

## Chapter 2: Transactions

Use the following information to select a language for a payables checks batch, for payables transactions, and for miscellaneous checks.

This information is divided into the following sections:

- [Modifying the language for a payables check batch](#)
- [Modifying the language for a single payables check](#)
- [Modifying the language to print a miscellaneous check](#)
- [Voiding and reprinting printed checks](#)

### Modifying the language for a payables check batch

The checks in a payables batch will print in the default language assigned to the Remit to Address ID in the Payables Transaction Entry window. If no default vendor address language is assigned, the check will print in the default language for the selected checkbook ID. If no default checkbook language is assigned, the checks will print in the language that you've chosen for your Microsoft Dynamics GP installation. You can change this language in the Payables Batch Language window if required. Refer to [Setting up the default checkbook language](#) on page 9 for information on setting the default checkbook language.



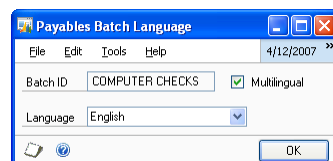
*If you have selected the Canadian check layout to print checks, we recommend that you do not change the language to anything other than English or French.*

This window will not open if you have marked the Enable European Electronic Funds Transfer option in the Company Setup Options window (Microsoft Dynamics GP menu >> Tools >> Setup >> Company >> Company >> Options) and selected Bank Transfer as the payment method in the Payables Batch Entry window.

You can print checks in different languages for refund checks for sales if the Auto-open Print Payables Checks option is marked in the Refund Checks Setup window (Microsoft Dynamics GP menu >> Tools >> Setup >> Sales >> Refund Checks).

#### To modify the language for a payables check batch:

1. Open the Payables Batch Language window  
(Transactions >> Purchasing >> Batches >> Select a Computer Checks batch >> Additional >> Payables Batch Language);  
(Transactions >> Purchasing >> Print Checks >> Select a computer checks batch >> Additional >> Payables Batch Language);  
(Transactions >> Purchasing >> Select Checks >> Print Checks >> Additional >> Payables Batch Language);  
(Transactions >> Purchasing >> Edit Checks >> Print Checks >> Select a computer checks batch >> Additional >> Payables Batch Language);  
(Transactions >> Sales >> Refund Checks >> Select Checks Batch ID zoom >> Additional >> Payables Batch Language)



2. The Batch ID field displays the batch ID for which to print checks.
3. Mark the Multilingual option to select a language. The Language field becomes available.

The Multilingual option is marked, and the language field displays the default language selected for the checkbook ID. The Multilingual option is unmarked and the Language field unavailable if no default language has been selected for the checkbook ID.

If you unmark the Multilingual option, the Multilingual Checks feature will be unavailable for the batch. The checks will be printed in the language that you have chosen for your Microsoft Dynamics GP Installation.

4. Select the language to print the check batch. The options are Arabic, English, French, Portuguese, Spanish or Vendor.

**Vendor** The checks for each vendor will print in the language assigned to the address ID selected in the Remit To field in the Vendor Maintenance window. A vendor may have no Remit To address ID assigned, or no language assigned to the Remit To address ID. The checks for such vendors will print in the language you've chosen for your Microsoft Dynamics GP installation.



*To print the checks in Arabic, be sure to choose the Arabic (U.A.E.) option from the language bar in your system task bar before printing the checks. Refer to [Enabling the Arabic language](#) on page 6 for more information.*

5. Choose OK to save the changes and close the window.
6. Choose Print in the Payables Batch Entry window to print the checks in the selected language. The checks will be printed in the layout that you have selected for the checkbook ID. You cannot change the language for a check once you've printed it. You can select any of the nine formats for printing the checks in different languages. Refer to the Microsoft Dynamics GP documentation for more information on check printing formats.

If you close the Payables Batch Entry window or the Print Payables Checks window, the Payables Batch Language window also closes, without saving the changes.

## Modifying the language for a single payables check

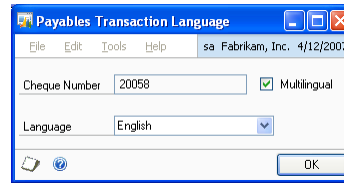
The check for a payables transaction will print in the default language assigned to the Remit To address ID in the Payables Transaction Entry window. If no default vendor address language is assigned, the check will print in the default language for the selected checkbook ID. If no default checkbook language is assigned, the checks will print in the language that you've chosen for your Microsoft Dynamics GP installation. You can change this language in the Payables Transaction Language window before printing the check. Refer to [Setting up the default vendor address language](#) on page 10, and to [Setting up the default checkbook language](#) on page 9 for more information.



*If you have selected the Canadian layout to print checks, we recommend that you do not change the language to anything other than English or French.*

**To modify the language for a single payables check:**

1. Open the Payables Transaction Language window.  
(Transactions >> Purchasing >> Transaction Entry >> Click Check expansion button >> Additional >> Payables Transaction Language)



2. The Check Number field displays the check number from the Payables Transaction Entry window.
3. Mark the Multilingual option to select a language. The Language field becomes available.

The Multilingual option is marked, and the language field displays the default language assigned to the Remit To address ID, or to the checkbook ID, in that order. The Multilingual option is unmarked and the Language field unavailable if no default language has been selected.

If you unmark the Multilingual option, the Multilingual Checks feature will be unavailable for the transaction. The checks will be printed in the language that you have chosen for your Microsoft Dynamics GP Installation.

4. Select the language to print the check. The options are Arabic, English, French, Portuguese, Spanish or Vendor.

If you select Vendor, be sure to select an address ID in the Remit-To field that has a language assigned to it. If you don't, a message is displayed indicating that no language has been selected. You can select a language in this window to print the check or assign a language to the Remit-To address ID in the Vendor Address Language window.



*To print the checks in Arabic, be sure to choose the Arabic (U.A.E.) option from the language bar in your system task bar before printing the checks. Refer to [Enabling the Arabic language](#) on page 6 for more information.*

5. Choose OK to save the changes and close the window.
6. Choose Print in the Payables Transaction Entry window to print the checks in the selected language. The checks will be printed in the layout that you have selected for the checkbook ID. You cannot change the language for a check once you've printed it. You can select any of the nine formats for printing the checks in different languages. Refer to Microsoft Dynamics GP documentation for more information on check printing formats.

If you close the Payables Transaction Entry window, the Payables Transaction Language window also closes, without saving the changes.

## Modifying the language to print a miscellaneous check

Miscellaneous checks will be printed in the default language assigned to the checkbook ID for the check. If no default language is assigned, the check will print in the language that you've chosen for your Microsoft Dynamics GP installation. You can change this language in the Miscellaneous Check Language window before printing the check. Refer to [Setting up the default checkbook language](#) on page 9 for more information on setting the default checkbook language.

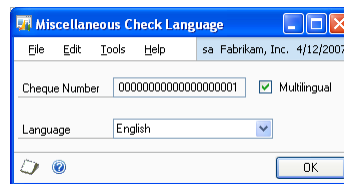
If you have selected the Canadian layout to print checks, we recommend that you do not change the language to anything other than English or French.



*If you've selected Vendor as the default checkbook ID language, you can select a different language in the Miscellaneous Check Language window. If you do not select a language, the check will print in the language that you have chosen for your Microsoft Dynamics GP installation.*

### To modify the language to print a miscellaneous check:

1. Open the Miscellaneous Check Language window.  
(Transactions >> Financial >> Miscellaneous Check >> Additional >> Miscellaneous Check Language)



2. The Check Number field displays the check number from the Miscellaneous Check Entry window.

The Multilingual option is marked, and the language field displays the default language selected for the checkbook ID. The Multilingual option is unmarked and the Language field unavailable if no default language has been selected.

If you unmark the Multilingual option, the Multilingual Checks feature becomes unavailable. The checks will be printed in the language that you have chosen for your Microsoft Dynamics GP installation.

Mark the Multilingual option to select a language. The Language field becomes available.

3. Select the language to print the check. The options are Arabic, English, French, Portuguese, or Spanish.



*To print the checks in Arabic, be sure to choose the Arabic (U.A.E) option from the language bar in your system task bar before printing the checks. Refer to [Enabling the Arabic language](#) on page 6 for more information.*

4. Choose OK to save the changes and close the window.

5. Choose Print Check in the Miscellaneous Checks window to print the checks in the selected language. The checks will be printed in the layout that you have selected for the checkbook ID. You cannot change the language for a check once you've printed it.

If you close the Miscellaneous Checks window while the Miscellaneous Check Language window is open, the Miscellaneous Check Language window also closes without saving any changes.

## Voiding and reprinting printed checks

You can reprint a check with the same options once it is printed, using the following procedures. You can reprint a check in different formats. Refer to Microsoft Dynamics GP documentation for more information on check printing formats.



*To print the checks in Arabic, be sure to choose the Arabic (U.A.E.) option from the language bar in your system task bar before printing the check. Refer to [Enabling the Arabic language](#) on page 6 for more information.*

### To reprint a check from the Payables Transaction Entry window:

You can reprint checks with a different check number even if you've deleted the currency terminologies for the language or unmarked the Enable Multilingual option in the ML Checks window. To reprint checks in the Canadian check layout, you must have marked the Enable Multilingual option in the ML Checks window.

To reprint a check in another language, you must post, void and reenter the transaction for the check in the Payables Transaction Entry window.

### To void and reprint a check from the Print Payables Checks window:

You can reprint checks with a different check number even if you've deleted the currency terminologies for the language or unmarked the Enable Multilingual option in the ML Checks window. To reprint checks in the Canadian check layout, you must have marked the Enable Multilingual option in the ML Checks window.

To reprint a posted check in another language, you must void the transaction in Microsoft Dynamics GP, build the batch, select a different language and then print the checks.

To reprint an unposted check in another language, void the printed check, and create and build a new batch in the Select Payables Checks window.



# Glossary

## **Canadian**

New Canadian check layout.

## **Checkbook ID**

The alphanumeric sequence used to identify a checkbook. These ID's have to be unique.

## **Currency**

Any form of money, including bills and coins, used as a medium of exchange in a country.

## **Currency ID**

The alphanumeric sequence used to identify a currency. These ID's have to be unique. For example, the currency ID for U.S. dollars can be Z-US\$.

## **Currency subunit**

The secondary denomination of a country's medium of exchange. For example, the currency subunit for U.S. dollar would be "Cents".

## **Currency terminology**

The terms used to print the currency units, subunits and the unit-subunit connector in words.

## **Currency unit**

The primary denomination of a country's medium of exchange. For example, the currency subunit for U.S. dollar would be "Dollar".

## **Multilingual**

Printing check amounts in words in different languages.

## **Payables Checks batch**

A payables check batch has all the payables payment transactions with the payment method as check and they can be saved, printed or posted directly.

## **Payables computer checks**

Checks that are auto calculated and printed using the accounting system.

## **Unit-Subunit connector**

The word that will connect the currency unit and subunit when a check is printed. For example, the unit subunit connector for U.S. dollar would be "And".

## **Void printed checks**

The process of reversing the effect of a printed computer check.



# Index

## A

Arabic language, enabling 6

## C

changes since last release, information about 3  
currency subunit for a currency, setting up 8  
Currency Terminology Setup window, displaying 7  
currency terminology, setting up 7  
currency unit for a currency, setting up 8  
current upgrade information, accessing on the Web 3

## D

default checkbook language, setting up 9  
Default Language Setup window, displaying 9  
documentation, symbols and conventions 2

## H

help, displaying 2  
Help menu, described 2

## I

icons, used in manual 2

## L

language for a payables transaction entry  
printing 12  
selecting 12  
language for payables checks batch  
printing 11  
selecting 11  
lessons, accessing 3  
lookup window, displaying 3

## M

Miscellaneous Check language, modifying 14  
Miscellaneous Check Language window, displaying 14  
ML Checks window, displaying 5  
Multilingual Checks, Setup Checklist 5  
Multilingual Checks, enabling 5

## N

navigation, symbols used for 2  
new features, information about 3

## O

Orientation training, accessing 3

## P

Payables Batch Language window  
described 11  
displaying 11

Payables Transaction Language window  
described 12  
displaying 13  
printed checks  
reprinting 15  
voiding 15

## R

reprinting  
checks from the Payables Transaction Entry window 15  
checks from the Print Payables Checks window 15  
required fields, described 3  
resources, documentation 2

## S

symbols, used in manual 2

## T

tutorial, accessing 3

## U

unit subunit connector for a currency, setting up 8  
upgrade information, accessing on the Web 3

## V

vendor address language, setting up 10  
Vendor Address Language window, displaying 10  
voiding, checks from the Print Payables Checks window 15

## W

what's new, accessing 3

