



Microsoft Dynamics™ GP
Financial Inflation Adjustment

Copyright

Copyright © 2007 Microsoft Corporation. All rights reserved.

Complying with all applicable copyright laws is the responsibility of the user. Without limiting the rights under copyright, no part of this document may be reproduced, stored in or introduced into a retrieval system, or transmitted in any form or by any means (electronic, mechanical, photocopying, recording, or otherwise), or for any purpose, without the express written permission of Microsoft Corporation. Notwithstanding the foregoing, the licensee of the software with which this document was provided may make a reasonable number of copies of this document solely for internal use.

Trademarks

Microsoft and Microsoft Dynamics are either registered trademarks or trademarks of Microsoft Corporation or its affiliates in the United States and/or other countries. FairCom and c-tree Plus are trademarks of FairCom Corporation and are registered in the United States and other countries.

The names of actual companies and products mentioned herein may be trademarks or registered marks - in the United States and/or other countries - of their respective owners.

Unless otherwise noted, the example companies, organizations, products, domain names, e-mail addresses, logos, people, places, and events depicted herein are fictitious. No association with any real company, organization, product, domain name, e-mail address, logo, person, place, or event is intended or should be inferred.

Intellectual property

Microsoft may have patents, patent applications, trademarks, copyrights, or other intellectual property rights covering subject matter in this document. Except as expressly provided in any written license agreement from Microsoft, the furnishing of this document does not give you any license to these patents, trademarks, copyrights, or other intellectual property.

Warranty disclaimer

Microsoft Corporation disclaims any warranty regarding the sample code contained in this documentation, including the warranties of merchantability and fitness for a particular purpose.

Limitation of liability

The content of this document is furnished for informational use only, is subject to change without notice, and should not be construed as a commitment by Microsoft Corporation. Microsoft Corporation assumes no responsibility or liability for any errors or inaccuracies that may appear in this manual. Neither Microsoft Corporation nor anyone else who has been involved in the creation, production or delivery of this documentation shall be liable for any indirect, incidental, special, exemplary or consequential damages, including but not limited to any loss of anticipated profit or benefits, resulting from the use of this documentation or sample code.

License agreement

Use of this product is covered by a license agreement provided with the software product. If you have any questions, please call the Microsoft Dynamics GP Customer Assistance Department at 800-456-0025 (in the U.S. or Canada) or +1-701-281-6500.

Publication date

March 2007

Contents

Introduction	1
What's in this manual.....	1
Symbols and conventions	2
Resources available from the Help menu.....	2
Send us your documentation comments	4
Chapter 1: Setup and routines	5
Selecting accounts.....	5
Viewing the selected accounts	5
Entering the inflation adjustment index.....	6
Adjusting inflation for a period	7
Chapter 2: Inquiries	9
Posting adjustment entries from General Ledger	9
Viewing posted adjustments	9
Glossary	11
Index	13

Introduction

Financial Inflation Adjustment is a tool that allows you to adjust your non monetary accounts for inflation for the fiscal periods that you have set up. Journal entries for the adjustment are created in General Ledger, from where you can post them.

Check for current instructions

This information was current as of February 2007. The documentation may be updated as new information becomes available. Check the Microsoft Dynamics GP online Web site (<http://go.microsoft.com/fwlink/?LinkID=79222>) for the most current documentation.

The introduction is divided into the following sections:

- [What's in this manual](#)
- [Symbols and conventions](#)
- [Resources available from the Help menu](#)
- [Send us your documentation comments](#)

What's in this manual

This manual is designed to give you an in-depth understanding of how to use the features of Financial Inflation Adjustment, and how it integrates with the Microsoft Dynamics™ GP system.

To make best use of Financial Inflation Adjustment, you should be familiar with systemwide features described in the System User's Guide, the System Setup Guide, and the System Administrator's Guide.

Some features described in the documentation are optional and can be purchased through your Microsoft Dynamics GP partner.



To view information about the release of Microsoft Dynamics GP that you're using and which modules or features you are registered to use, choose Help >> About Microsoft Dynamics GP.

This manual is divided into the following chapters:

- [Chapter 1, "Setup and routines,"](#) explains how to set up Financial Inflation Adjustment for your company. You can select the accounts for which to perform inflation adjustment. You can perform the inflation adjustment for a selected period according to the inflation index specified by the authorities.
- [Chapter 2, "Inquiries,"](#) describes how you can post the adjustment entries from General Ledger. You can view the details for adjustments you have posted for a selected period.

Symbols and conventions

For definitions of unfamiliar terms, see the glossary in the manual or refer to the glossary in Help.

Symbol	Description
	The light bulb symbol indicates helpful tips, shortcuts and suggestions.
	The warning symbol indicates situations you should be especially aware of when completing tasks.

This manual uses the following conventions to refer to sections, navigation and other information.

Convention	Description
<i>Creating a batch</i>	Italicized type indicates the name of a section or procedure.
File >> Print or File > Print	The (>>) or (>) symbol indicates a sequence of actions, such as selecting items from a menu or toolbar, or pressing buttons in a window. This example directs you to go to the File menu and choose Print.
TAB or ENTER	All capital letters indicate a key or a key sequence.

Resources available from the Help menu

The Microsoft Dynamics GP Help menu gives you access to user assistance resources on your computer, as well as on the Web.

Contents

Opens the Help file for the active Microsoft Dynamics GP component, and displays the main “contents” topic. To browse a more detailed table of contents, click the Contents tab above the Help navigation pane. Items in the contents topic and tab are arranged by module. If the contents for the active component includes an “Additional Help files” topic, click the links to view separate Help files that describe additional components.

To find information in Help by using the index or full-text search, click the appropriate tab above the navigation pane, and type the keyword to find.

To save the link to a topic in the Help, select a topic and then select the Favorites tab. Click Add.

Index

Opens the Help file for the active Microsoft Dynamics GP component, with the Index tab active. To find information about a window that’s not currently displayed, type the name of the window, and click Display.

About this window

Displays overview information about the current window. To view related topics and descriptions of the fields, buttons, and menus for the window, choose the appropriate link in the topic. You also can press F1 to display Help about the current window.

Lookup

Opens a lookup window, if a window that you are viewing has a lookup window. For example, if the Checkbook Maintenance window is open, you can choose this item to open the Checkbooks lookup window.

Show Required Fields

Highlights fields that are required to have entries. Required fields must contain information before you can save the record and close the window. You can change the font color and style used to highlight required fields. On the Microsoft Dynamics GP menu, choose User Preferences, and then choose Display.

Printable Manuals

Displays a list of manuals in Adobe Acrobat .pdf format, which you can print or view.

Orientation Training

Accesses online tutorials that show you how to complete basic procedures within Microsoft Dynamics GP. Additional tutorials are available through the CustomerSource Web site.

What's New

Provides information about enhancements that were added to Microsoft Dynamics GP since the last major release.

Microsoft Dynamics GP Online

Opens a Web page that provides links to a variety of Web-based user assistance resources. Access to some items requires registration for a paid support plan.

Current implementation and upgrade information The most recent revisions of upgrade and implementation documentation, plus documentation for service packs and payroll tax updates.

User documentation and resources The most recent user guides, how-to articles, and white papers for users.

Developer documentation and resources The most recent documentation and updated information for developers.

Product support information Information about the Microsoft Dynamics GP product support plans and options that are available, along with information about peer support and self-support resources.

Services information Information about Microsoft Dynamics GP support, training, and consulting services.

Microsoft Dynamics GP Community Access to newsgroups, where you can ask questions or share your expertise with other Microsoft Dynamics GP users.

CustomerSource home page A wide range of resources available to customers who are registered for a paid support plan. Includes access to Knowledge Base articles, software downloads, self-support, and much more.

U.S. Payroll Updates

Provides access to tax updates for state and federal tax withholding. When you select an option, the process to install the updates will begin immediately.



Check with your system administrator before installing tax updates. To be sure that tax updates are installed correctly, refer to documentation for specific tax updates on the CustomerSource Web site.

Customer Feedback Options

Provides information about how you can join the Customer Experience Improvement Program to improve the quality, reliability, and performance of Microsoft® software and services.

Send us your documentation comments

We welcome comments regarding the usefulness of the Microsoft Dynamics GP documentation. If you have specific suggestions or find any errors in this manual, send your comments by e-mail to the following address: bizdoc@microsoft.com.

To send comments about specific topics from within Help, click the Documentation Feedback link, which is located at the bottom of each Help topic.

Note: By offering any suggestions to Microsoft, you give Microsoft full permission to use them freely.

Chapter 1: Setup and routines

Use this information to install Financial Inflation Adjustment, and to select the accounts for which to perform inflation adjustment. You can perform the adjustment for a specific period of the fiscal years that you've set up in Microsoft Dynamics GP.

This information is divided into the following sections:

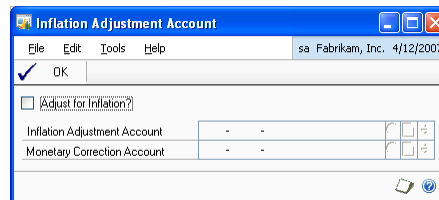
- [Selecting accounts](#)
- [Viewing the selected accounts](#)
- [Adjusting inflation for a period](#)
- [Entering the inflation adjustment index](#)

Selecting accounts

You can select the financial accounts to include in the inflation adjustment. You must adjust these accounts for inflation at the end of every fiscal period, based on the inflation percentage specified by the legal authorities.

To select accounts:

1. Open the Inflation Adjustment Account window.
(Cards >> Financial >> Account >> select an account >> Additional >> Inflation Adjustment)



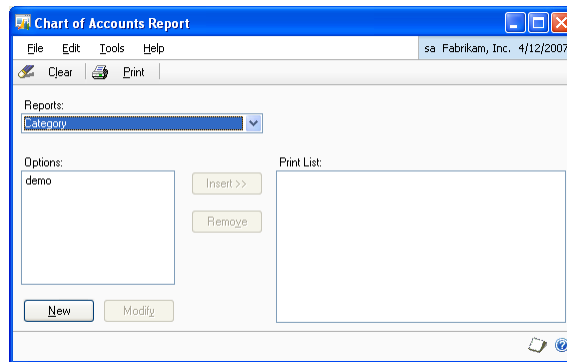
2. Mark the Adjust for Inflation checkbox for the selected account.
3. Enter or select an account to be debited with the inflation adjustment amount, if any.
4. Enter or select an account to be credited with the monetary correction amount, if any.
5. Choose OK to save the values you've entered and return to the Account Maintenance window.

Viewing the selected accounts

You can print a report for the accounts that you have marked for inflation adjustment in the Chart of Accounts Report window. The Chart of Reports window has a report option for inflation adjustment. Use this option to first create a report option for the inflation adjustment report. Refer to the General Ledger documentation for more information on creating report options.

To view the selected accounts:

1. Open the Chart of Accounts Report window.
(Reports >> Financial >> Account)



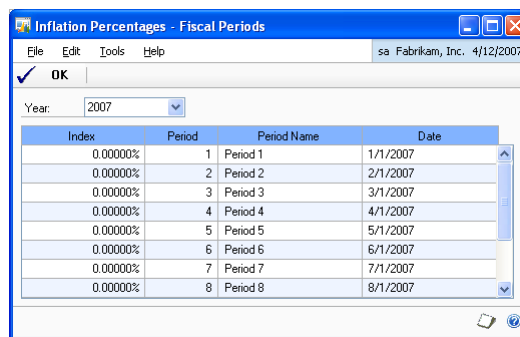
2. Select Inflation Adjustments in the Reports list. The Options field displays all the report options you have set up for Inflation Adjustment.
3. Select a report option, and choose Insert to insert it into the Print list. You can select multiple report options to print.
4. Choose Print to view and print reports based on the options you have selected.

Entering the inflation adjustment index

You can enter the adjustment index for each period of each fiscal year that you have set up in Microsoft Dynamics GP.

To enter the inflation adjustment index:

1. Open the Inflation Percentages - Fiscal Periods window.
(Microsoft Dynamics GP menu >> Tools >> Routines >> Financial >> Inflation Adjustments >> Adjustment Year expansion button)



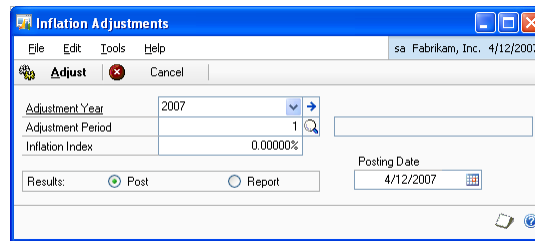
2. Select the year for which to enter the adjustment indices. The scrolling window displays the details for all the periods set up for the selected year.
3. Enter the adjustment index for each period in the respective Index field.
4. Choose OK to close the window after entering the required indices.

Adjusting inflation for a period

Use the Inflation Adjustments window to adjust the inflation for a specific period of a fiscal year. You can enter the inflation percentage for a period in the Inflation Percentages - Fiscal Period window. Refer to [Entering the inflation adjustment index](#) on page 6 for more information.

To adjust inflation for a period:

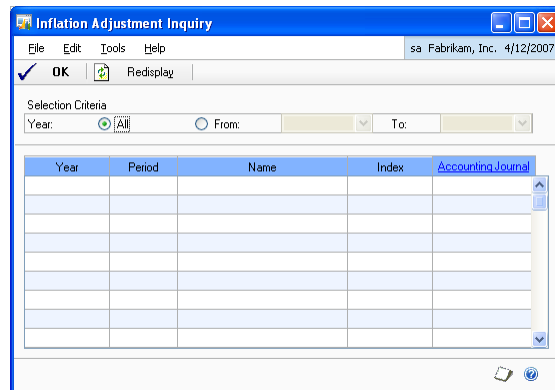
1. Open the Inflation Adjustments window.
(Microsoft Dynamics GP menu >> Tools >> Routines >> Financial >> Inflation Adjustments)



2. Select the year for which to perform the adjustment. Select the Adjustment Year expansion button to open the Income Percentages - Fiscal Periods window, where you can enter or change the percentage for one or more periods of a year.
3. Select the adjustment period. The Inflation Index field displays the percentage you entered for the period in the Income Percentages - Fiscal Period window. You can change this value.
4. In the Results field, select Report to view a report before posting the adjustment. Choose Post to post the adjustment after verifying that the values on the report are accurate.
5. Enter the posting date to post the adjustment. The default date is the current user date.
6. Choose Adjust to view the report or to post the adjustment, depending on your selection in the Results field.
7. Choose Cancel to close the window without adjusting for inflation.

To view posted adjustments:

1. Open the Inflation Adjustment Inquiry window.
(Inquiry >> Financial >> Inflation Adjustment)



2. Select to view the adjustments for all years, or enter a year range.
3. Choose Redisplay to display the adjustments for the selected years in the scrolling window. The scrolling window displays the year, period, inflation index and the adjustment amount for each adjustment.
4. Select an adjustment, and click the Accounting Journal link to open the Journal Entry Inquiry window. You can view the details of the journal entry created for the adjustment in General Ledger.
5. Choose OK to close the window.

Glossary

Inflation adjustment index

Values that are used to adjust the inflation for a specific period of a fiscal year.

Index

A

adjusting inflation, for a period 7
adjustment entries, viewing in General Ledger 9
adjustment index, entering 6
adjustments
 posting in a batch 9
 viewing posted 9

B

batch posting, adjustment entries 9

C

changes since last release, information about 3
Chart of Accounts Report window, displaying 6
current upgrade information, accessing on the Web 3

D

documentation, symbols and conventions 2

H

help, displaying 2
Help menu, described 2

I

icons, used in manual 2
index of adjustment, entering 6
inflation, adjusting 7
inflation adjustment, introduction 1
Inflation Adjustment Account window, displaying 5
Inflation Adjustment Inquiry window, displaying 10
Inflation Adjustments window, displaying 7

L

lessons, accessing 3
lookup window, displaying 3

N

new features, information about 3

O

Orientation training, accessing 3

R

required fields, described 3
resources, documentation 2

S

selecting accounts, for adjustment 5
symbols, used in manual 2

T

tutorial, accessing 3

U

upgrade information, accessing on the Web 3

V

viewing, selected accounts 5

W

what's new, accessing 3

